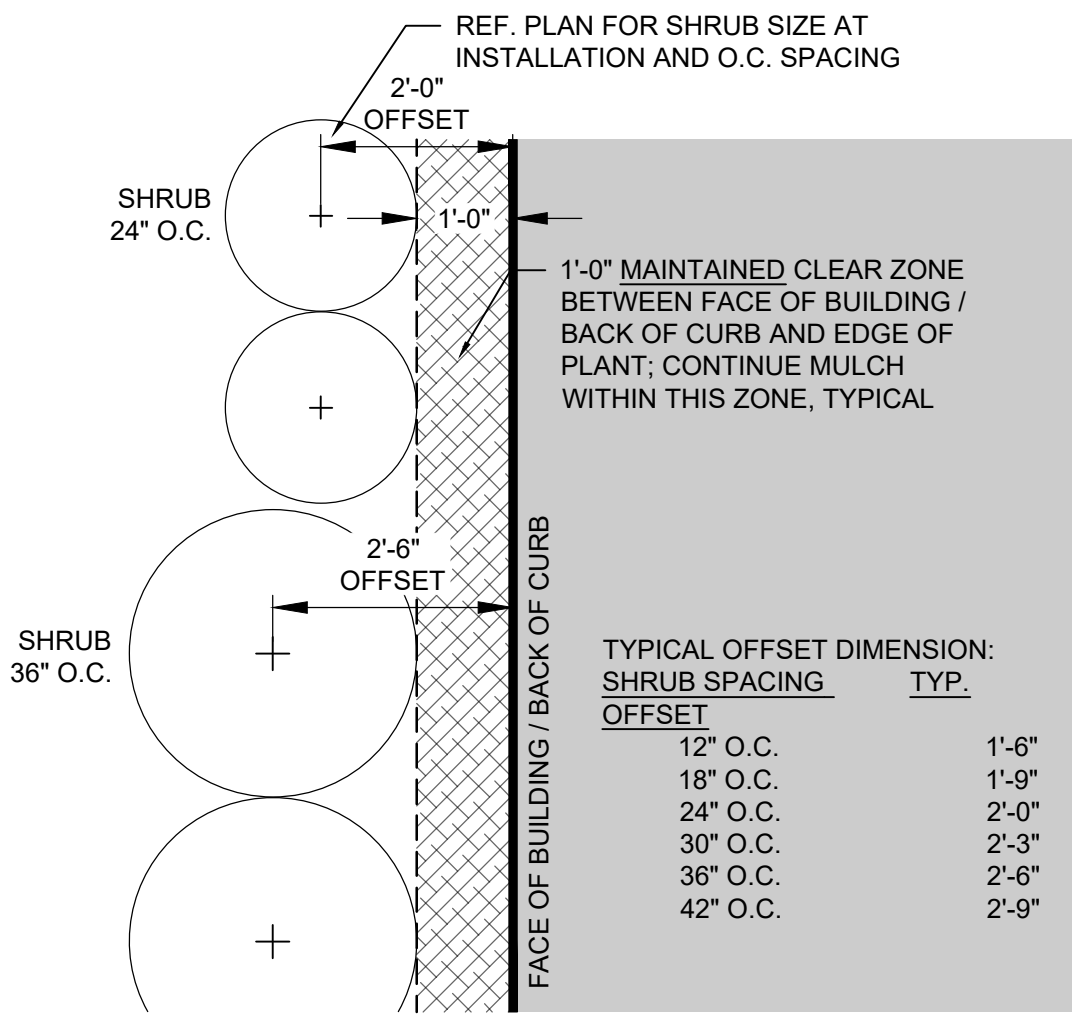
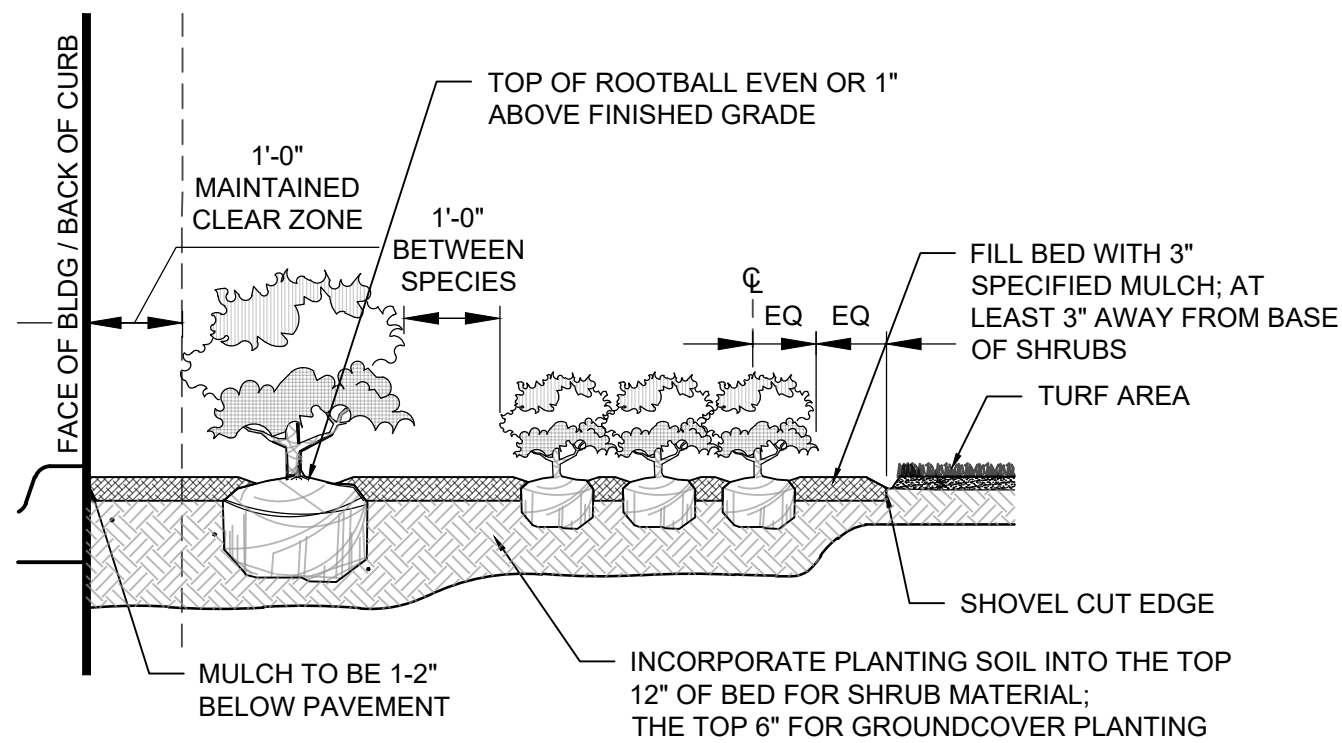


D
C
B
A



TYPICAL SHRUB OFFSET AT BUILDING / CURB

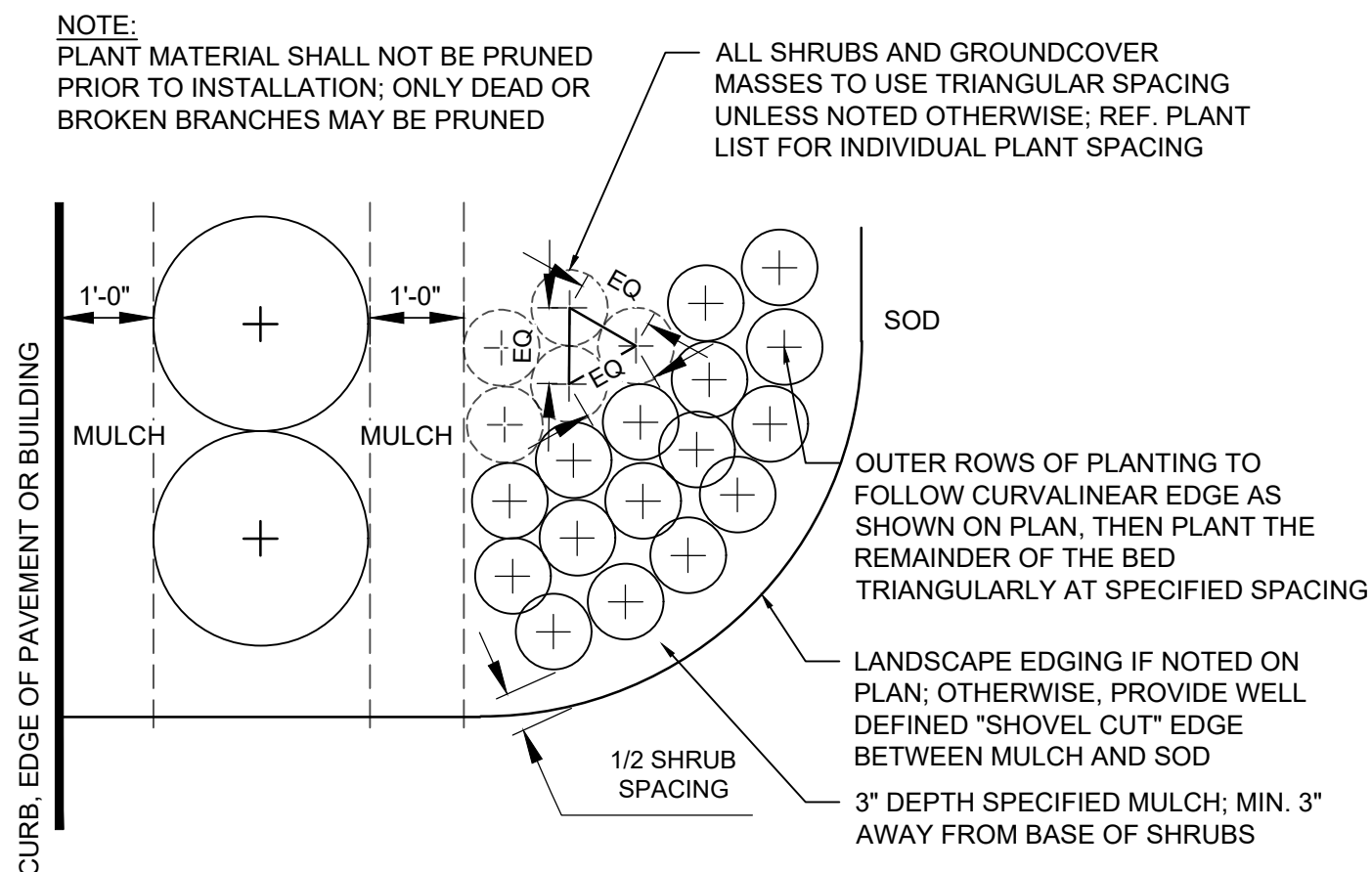
8 PLAN NOT TO SCALE



- NOTE:
- PLANT MATERIAL SHALL NOT BE PRUNED PRIOR TO INSTALLATION.
 - CONTRACTOR SHALL ASSURE PERCOLATION OF ALL PLANTING BEDS PRIOR TO INSTALLATION.

SHRUB AND GROUNDCOVER PLANTING

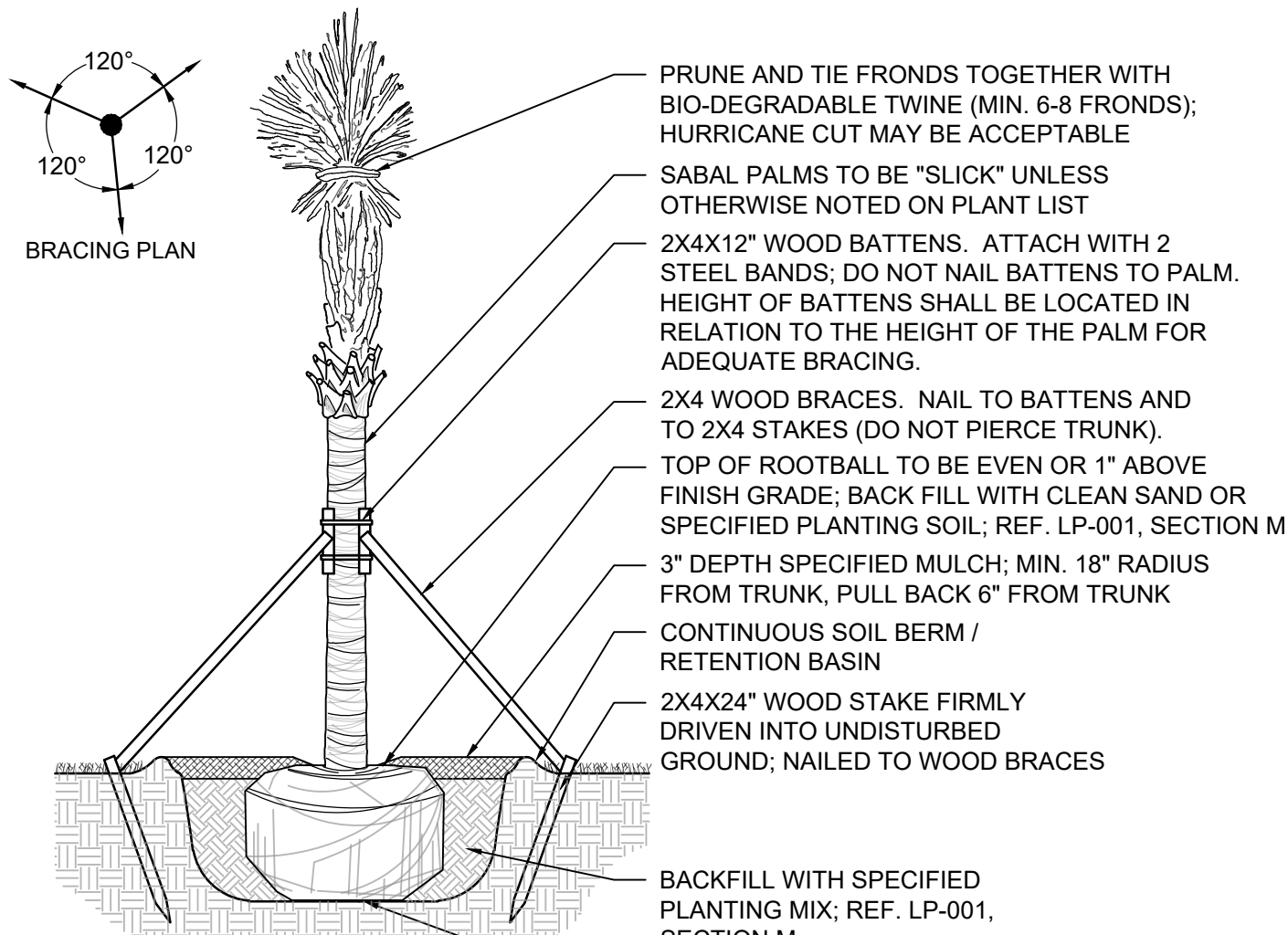
7 SECTION NOT TO SCALE



SHRUB AND GROUNDCOVER PLANTING

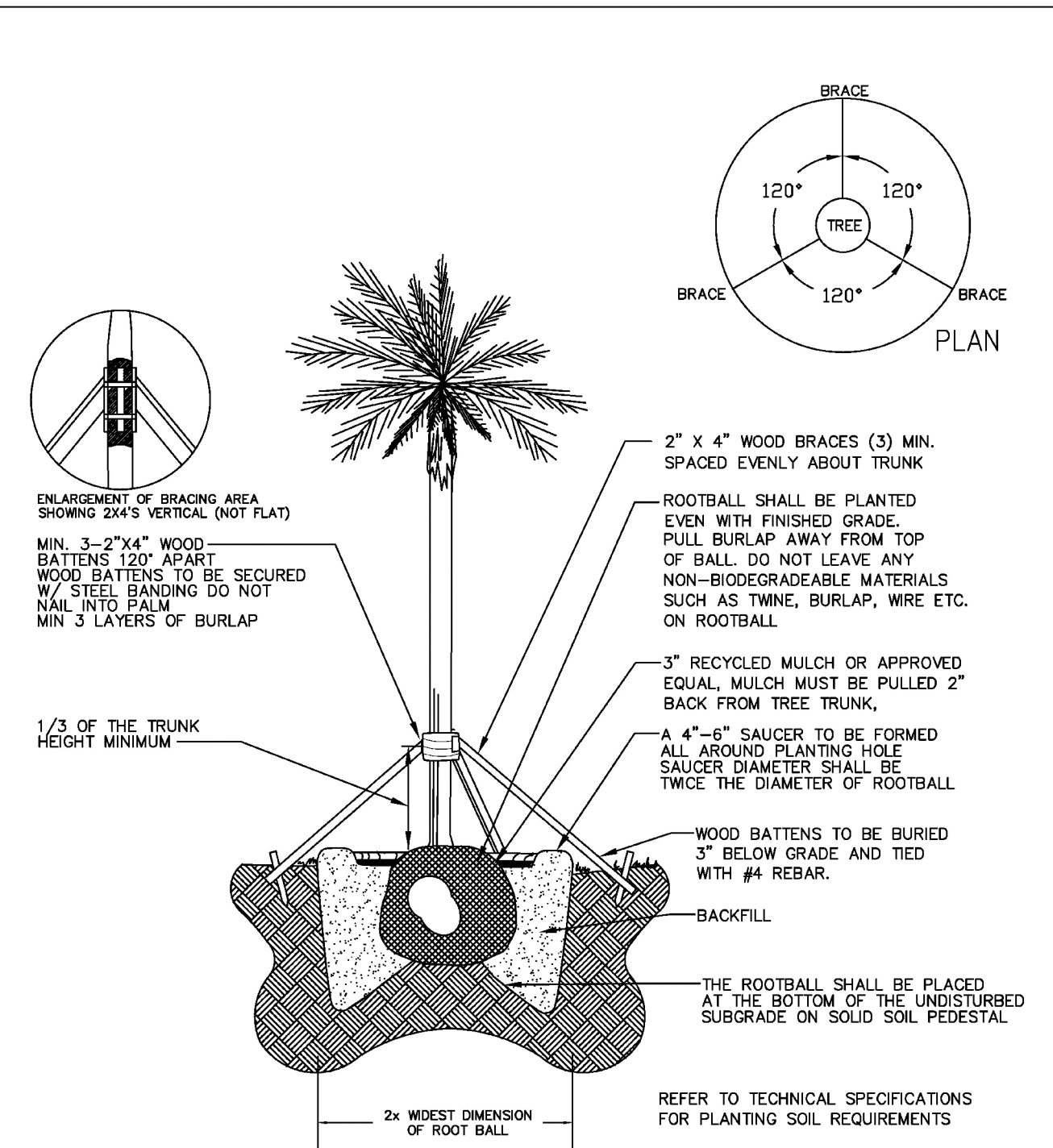
6 PLAN NOT TO SCALE

- NOTE:
- REF. LP-001, LANDSCAPE NOTES, FOR ADDITIONAL REQUIREMENTS.
 - ROOT BALL SIZE FOR ALL TREES AND PALMS TO BE IN PROPORTION TO SIZE AND TYPE OF PALM PER FLORIDA GRADES AND STANDARDS FOR NURSERY PLANTS.



SABAL PALM PLANTING DETAIL

5 SECTION NOT TO SCALE

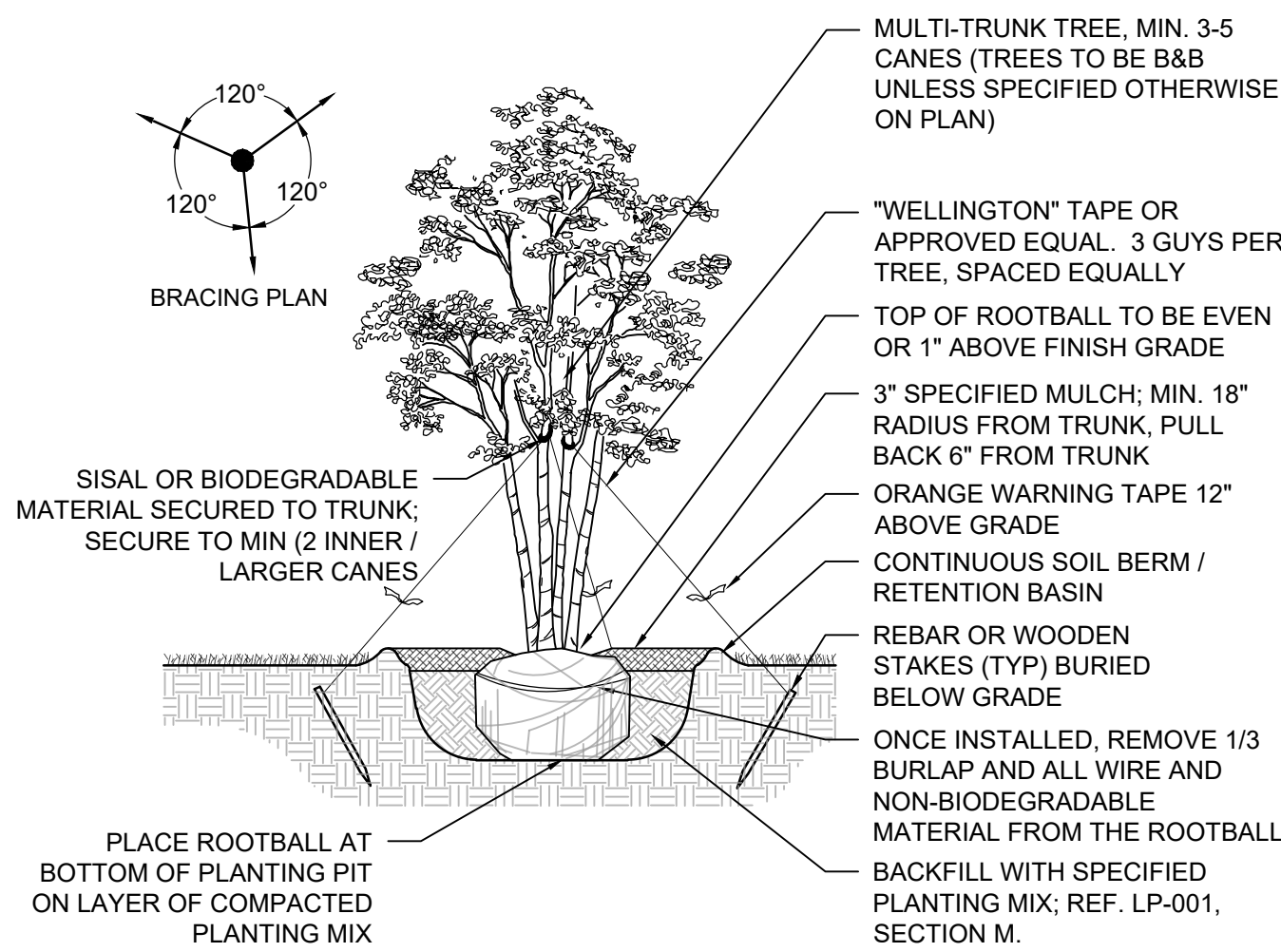


PALM PLANTING DETAIL

REVISIONS		URBAN FORESTRY		PALM PLANTING DETAIL	
BY	DATE	TCW	DATE	APPROVED BY:	DATE: JANUARY 2025
TCW	APRIL 2010	AS	01/2025	URBAN FORESTER	DWG. NO. 100-1
SCALE: N.T.S.		CITY OF POMPAÑO BEACH			

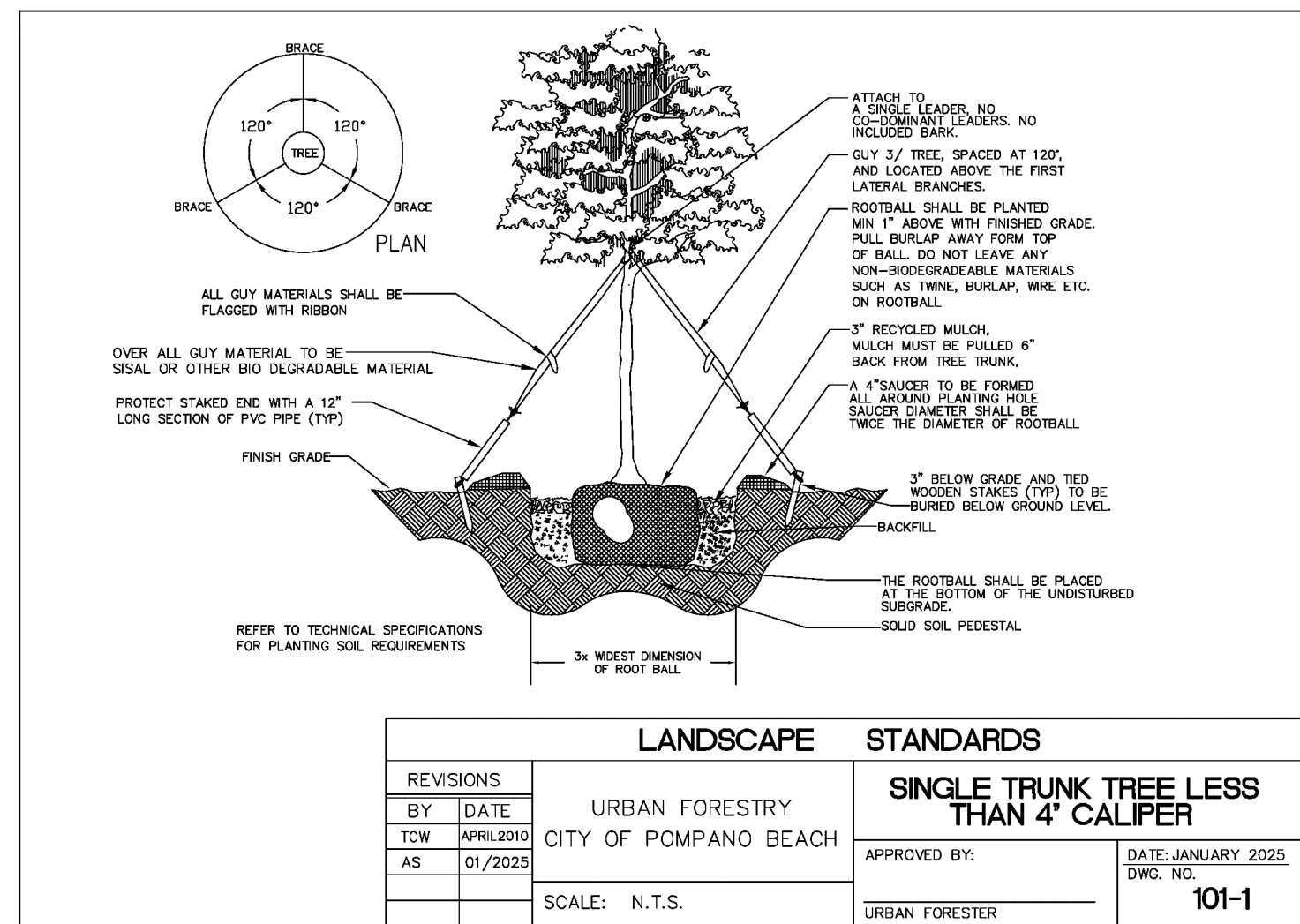
LARGE PALM / TREE PLANTING DETAIL

4 SECTION NOT TO SCALE



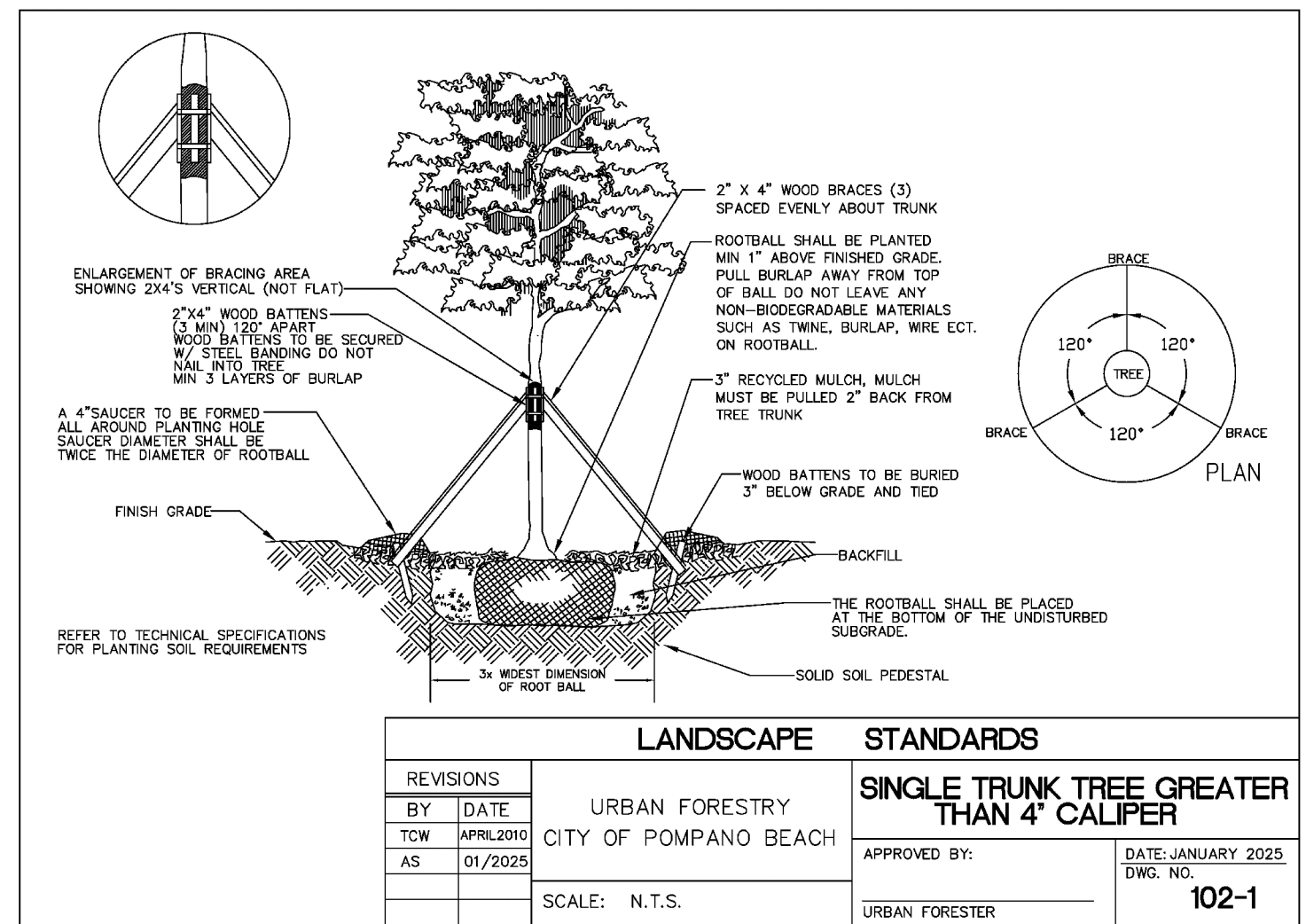
MULTI-TRUNK TREE PLANTING DETAIL

3 SECTION NOT TO SCALE



SINGLE TRUNK TREE PLANTING DETAIL

2 SECTION NOT TO SCALE



SINGLE TRUNK TREE GREATER THAN 4\"/>

1 SECTION NOT TO SCALE

KEITH
301 East Atlantic Blvd.
Pompano Beach, FL 33060
PH: (954) 788-3400

Florida Engineering Business License: CA7928
Florida Surveyor and Mapper Business License: LB6860
Florida Landscape Architecture Business License: LC26000457

Plotted by: Kurena On 9/25/2025 3:37 PM

REVISIONS		
NO.	DESCRIPTION	DATE

PRELIMINARY PLAN NOT FOR CONSTRUCTION

THESE PLANS ARE NOT FULLY PERMITTED AND ARE SUBJECT TO REVISIONS MADE DURING THE PERMITTING PROCESS. RESPONSIBILITY FOR THE USE OF THESE PLANS PRIOR TO OBTAINING PERMITS FROM ALL AGENCIES HAVING JURISDICTION OVER THE PROJECT WILL FALL SOLELY UPON THE USER.

ISSUE DATE: 07/03/25
DESIGNED BY: SL, RK
DRAWN BY: SL, GM
CHECKED BY: KS
BID-CONTRACT:

PAUL H. WEINBERG, PLA
FLORIDA REG. NO. LA666804
(FOR THE FIRM)

CLIENT
GREEN MILLS GROUP

PROJECT
ASPIRE 1650

SHEET TITLE
PLANTING DETAILS

SHEET NUMBER
LP-501
PROJECT NUMBER
PZ25-12000022
DATE
11/18/2025
PROJECT VALUE
16500.00

PZB

STATUS: PRELIMINARY